

MINUTES

Meeting: SOUTHERN WILTSHIRE AREA BOARD
Place: Pitton Village Hall, White Hill, Pitton, Salisbury, SP5 1EB
Date: 3 May 2018
Start Time: 7.00 pm
Finish Time: 9.38 pm

Please direct any enquiries on these minutes to:

Lisa Moore (Democratic Services Officer), Tel: 01722 434560

or (e-mail) lisa.moore@wiltshire.gov.uk

Papers available on the Council's website at www.wiltshire.gov.uk

In Attendance:

Wiltshire Councillors

Cllr Richard Britton (Chairman), Cllr Richard Clewer (Vice-Chairman),
Cllr Christopher Devine, Cllr Ian McLennan and Cllr Leo Randall

Wiltshire Council Officers

Tom Bray, Southern Wiltshire Community Engagement Manager
Lisa Moore, Democratic Services Officer

Town and Parish Councillors

Alderbury Parish Council – E Hartford
Downton Parish Council – R Yeates
Firsdown Parish Council – B Edgeley & H Edgeley
Grimstead Parish Council – G Bayford & L Bayford
Landford Parish Council – K Parker
Laverstock and Ford Parish Council – K Beard
Pitton and Farley Parish Council – R Coppock & C Purves
West Dean Parish Council – H Urquhart
Whiteparish Parish Council – J Herrett
Winterslow Parish Council – I Moody, P Robinson & A Silence

Partners

Wiltshire Police – Inspector Pete Sparrow
Dorset & Wiltshire Fire Service – Jason Moncrieff

Total in attendance: 36

<u>Agenda Item No.</u>	<u>Summary of Issues Discussed and Decision</u>
69	<p><u>Welcome and Introductions</u></p> <p>The Chairman, Councillor Richard Britton welcomed everyone to the meeting of the Southern Wiltshire Area Board.</p> <p>As this was the last meeting in the municipal year, the format was a little different. There would be a feedback participation session in item 9 – Community Development and the JSA to seek opinions on the way the Board should move forward in 2018/19.</p>
70	<p><u>Apologies</u></p> <p>There were none.</p>
71	<p><u>Minutes</u></p> <p>The minutes of the previous meeting held on Wednesday 28 March, were agreed as a correct record and signed by the Chairman.</p>
72	<p><u>Declarations of Interest</u></p> <p>There were none.</p>
73	<p><u>Chairman's Announcements</u></p> <p>The Chairman made the following announcements:</p> <ul style="list-style-type: none"> • Salisbury's 2nd Bangers & Bikes Sportive – this was a charity event being run by the Fire and Rescue Service which would be advertised in more detail under the Fire update later in the agenda. • General Data Protection Regulation (GDPR) – Parish Councils (PCs) were concerned with the impact on them with regards to the changes to GDPR coming in on May 25th. Guidance had indicated that there would be a light touch period initially. <p>There had been an approach to Government for PCs to be exempt in the GDPR.</p> <p>Cllr Clewer noted that the Minister had moved an amendment that would make things less onerous, to make PCs exempt. Information would be circulated to all PCs. Until more was known on the outcome of this, we should wait until the next meeting if necessary to consider whether further guidance was required.</p>

	<ul style="list-style-type: none"> • Speed Indicator Device (SID) – An initiative between Landford and Whiteparish was being considered to share a SID. This seemed an attractive option for neighbouring PCs to get together to buy a SID, at the cost of around £3k. Those already enrolled in the Area Board syndicate would have the AB SID more frequently, as would those parishes that bought their own.
74	<p><u>To note the written reports and updates in the agenda pack or distributed on the night</u></p> <p>The Board noted the written reports and updates attached to the agenda pack.</p> <p><u>Fire & Rescue Service – Jason Moncrieff</u></p> <p>It had been a busy time for the service in Salisbury, following the Salisbury poisoning incident.</p> <p>The service had been assisting with shared accommodation at Five Rivers, following the decant of the Police from Bourne Hill.</p> <p>The 4x4 cell was used to get essential workers to their places of work during the snow.</p> <p>A blood donation session would be taking place at Salisbury fire station on 15 May.</p> <p>A Salamander Course would be hosted at Amesbury in June.</p> <p>On 13 May, the Bangers and Bikes event would take place, this was a charity bike ride, with variety of distances available, with sausages and hot drinks available after completion of the race.</p> <p>At the last meeting it had been noted that there was a sudden drop in the availability for February, however this was now back up for March.</p> <p>Community engagement was ongoing in delivering safe and well visits, around the parishes. Jason urged people to spread the word and to encourage more people to book a visit.</p> <p>The Chairman noted that the attached update detailed an invite for schools to arrange visits to fire stations or one of the safety centres.</p> <p>For more information or to make a booking for your school or pre-school, please visit the webpage; https://www.dwfire.org.uk/school-visits/ or email enquiries@dwfire.org.uk</p> <p><u>Clinical Commissioning Group (CCG)</u></p> <p>Following the comment at the last Board meeting in relation to the type of</p>

	<p>information contained in the updates, the Board was trying to arrange for a speaker to attend and hoped to set this up for the next meeting.</p> <p>Information on current consultations was available online at: http://www.wiltshire.gov.uk/council/consultations.htm</p>
75	<p><u>Matters of Community Wide Interest</u></p> <p>There were no updates from Parish Council or Community groups.</p> <p><u>Community Policing – local issues and priorities</u></p> <p>Inspector Pete Sparrow was in attendance and circulated an update at the meeting. A copy of that update is attached to these minutes.</p> <p>In addition, Inspector Sparrow gave the following update:</p> <ul style="list-style-type: none"> • The first major incident, of the heavy snow fall was followed straight after by a second incident. During the snow, the community came out and helped others in need of assistance. • The second incident was an unprecedented one, which led to a massive logistical task for staff. He thanked the community for the outpouring of support for the well wishes to those affected and the offers of drinks for the Officers on duty at the cordons. • Wiltshire was a safe place, the support of the wider emergency services had been pushed to the limit, however it had still been business as usual, with the usual services being maintained. The Police were now moving from crime scenes towards the lengthy clean up phase and the 4 people who were physically affected were all showing positive signs of recovery • Last week the crime statistics for 2017 were published. Locally, up to the end of march, all crime has risen by 3%, in the Southern area, it had gone up 4%. Burglary had gone down by 16%. Whilst robbery had gone down by 100% as there had not been any this year. This was down to the amount of work on dealing with class A drug abuse. • Cycle theft had gone up 65% across the south. We will be working to tackle that. • South Wiltshire CPT had also joined forces with the local Community Speed Watches (CSW). Having access to the data collected by these volunteers, we can better prioritize directing our Officers to the areas where they should be conducting speed enforcement. There was an opportunity for the various Area Boards to set up and support more CSW programs. I will commit that South Wilts CPT will attend the top 3 locations based on collected speed SW data and 1 further location that is rotated to allow us to attend all CSWs over the year. Not only is this a

	<p>great way to support another volunteer sector, it is also an opportunity to demonstrate that our officers are getting out in their areas.</p> <p>The Chairman added that the work done by emergency services was generally good to see and greatly appreciated and valued by the public.</p> <p><u>Questions and comments received:</u></p> <ul style="list-style-type: none"> • Cllr Devine noted that in previous years, when there had been incidents in his ward, he had received a call from the Police to inform him. However, during the recent emergency, which had been run by the Met Counterterrorism Command, he had not been made aware when they came to do a closedown in Winterslow. <u>Answer:</u> There is always the opportunity for you to call us, the conversation can go both ways. This was the first time an incident like this had happened, and quick decisions had to be made. There was an awful lot going on where we had to listen to a lot of advice from several agencies at a high level. • Cllr Devine noted that in his areas, there are some rat runs, and there were no Speed watch groups, so it would also be nice to have patrols in those areas. <u>Answer:</u> The idea of following speed watch, is so we can follow data already set. If there are areas that could benefit from CSW then I would urge those parishes to set one up.
76	<p><u>Electoral Review</u></p> <p>Under his role of Chairman of the Electoral Review Committee, Cllr Richard Clewer gave an update on the Review of the Local Government Boundary Commission. A written handout was circulated at the meeting and is attached to these minutes for information.</p> <p>Electoral Reviews determine both the overall number of councillors on a council, and the pattern of divisions within that council. The current review would be the first review since Wiltshire Council was formed in 2009.</p> <p>It was required because 25 Divisions had a variance from the average in the size of their electorate of more than 10%, and 2 Divisions had a variance from the average of over 30%.</p> <p>The review's outcome, if implemented, would apply from the next elections in May 2021. Parliament, not Wiltshire Council, would be responsible for the final decision, following a recommendation from the Local Government Boundary Commission for England (LGBCE).</p> <p>The councils Electoral Review Committee considered a great deal of evidence and recommended to Full Council that a council size of 99 Councillors be put forward, to enable us to keep the area boards working.</p>

The implications of having fewer councillors could be quite significant for some of our areas.

We were told we would have a decision on 1st May, instead they have come back and said they are unsure and would like to talk further about the Area Board arrangements.

Once we have been informed of what the number of councillors in Wiltshire council from the next election will be, the LGBCE will hold a public consultation.

The consultation will seek proposals from the council, towns and parishes, other community or local groups, and members of the public, on how the determined number of divisions should be drawn up.

Cllr Clewer encouraged everyone to put submissions in and engage in the process.

The current electorate for the Southern Wiltshire Community Area was 18,209 with 5 electoral divisions. The average division size at present across the council area was 3752.

The projected draft electorate for the Southern Wiltshire Community Area in 2024 was 20,128.

Below are listed the draft figures for the projected electorates for the current pattern of division, and for parishes, in 2024. These may be subject to some change.

Divisions

Laverstock, Ford and Old Sarum – 5181 (this does not include section of Laverstock Parish currently within Salisbury St Marks and Bishopdown Division)
Winterslow – 3325
Alderbury and Whiteparish – 3583
Redlynch and Landford – 3875
Downton and Ebble Valley – 4163

Parishes

Alderbury – 1844
Britford – 300
Clarendon Park – 208
Coombe Bissett – 599
Downton – 2772
Firsdow – 508
Grimstead – 476
Landford – 1628
Laverstock – 7654 (including 2473 currently in Salisbury St Marks and Bishopdown, and Salisbury Area Board)
Odstock – 457
Pitton and Farley – 656

Redlynch– 2246
West Dean – 204
Whiteparish – 1265
Winterslow – 1748

It is these numbers that the LGBCE will use to create new divisions. They may use parts of parishes, and may decide not to utilise existing area board boundaries.

If we look at our current divisions, some will be too big. Laverstock will be far too big to be a single division at that point. Winterslow will be too small to be a division.

Some parishes are going to need to think about how to split things up, and some will have to look at applying for pieces of land to be transferred in. Parishes need to go and look at where they feel they want to be.

After the next stage the LGBCE will consult upon its draft recommendations on new divisions, published after considerations of the submissions that have been made. Area Boards will again be consulted at this stage, and the Electoral Review Committee will consider a response to the draft recommendations

Sometime in 2019 the final recommendations of the LGBCE will be published. They will be laid before Parliament, where the recommendations may be accepted, or rejected, but not amended.

Questions:

- Are you saying that depending on the overall number of Cllrs agreed, there may be some areas of Laverstock and Ford (L&F) that would need to go over to Salisbury? Answer: Yes, L&F would be too large to have as one division. They would need to think carefully about whether they want to sit with Salisbury or one of the underlying villages. Be clear about the future of L&F and strongly submit your views to the consultation.
- Brian Edgeley, Firsdow – Looking at the stats for Winterslow, and the smaller villages like Firsdow what should we discuss. Answer: When you look at some of these areas, it may be better to start at the edges and work your way in. look at where they might be able to be expanded. If the numbers are reduced, we have to start looking at quite radical options. You need to make sure your parish views are expressed very firmly.
- Cllr Randall – Had the idea of multi member wards had been excluded? Answer: We had stated we do not want any multi member wards. This was a firm view of the council and the committee.
- With the possibility of the boundary of Salisbury City changing, is that true

	<p>of other area boards? <u>Answer</u>: Yes it was possible, depending on the key number of councillors.</p> <ul style="list-style-type: none"> • Cllr McLennan – We have just come through boundary adjustments to facilitate new boundaries for parishes. Some of the most significant ones were in Cllr Randalls patch and mine, in L&F which gained back the parish it once was, which meant taking some out of Salisbury. With Longhedge still being built, a judgement on how many electorate we will end up with from those properties when developed will need to be made. I would ask that the starting point is that you look to have 2 councillors from L&F, and disregard Salisbury. A critical point is that we have established parish boundaries at great cost. <u>Answer</u>: If we end up with 99 Councillors you may just get away with splitting L&F into two with two councillors. <p>The Chairman added that the pressure from the electoral review body would be a much bigger reduction on councillors than we have talked about here and the effect on the Area Board would be profound.</p> <p>Get ready to jump into action once we hear the outcome of their deliberations.</p>
77	<p><u>Community Development and the Joint Strategic Assessment (JSA)</u></p> <p>The Chairman explained that at the last Area Board there was considerable debate about the function of the Board. He noted that Area Boards were always envisaged as an interface between communities and the administration at Trowbridge.</p> <p>There were areas where we do need to engage with Wiltshire Council, however our focus had been to work downwards, as we feel that was the best way to improve things for our communities.</p> <p>The Board wished to have a discussion on the role of the Area Boards, in furthering the aims of the JSA in general and community development in particular.</p> <p>The Board tried to help communities and parishes with resources and funding where possible. Including signposting to additional funds and volunteering groups.</p> <p>Tom then ran through some of the JSA themes. The priorities were split into 9 themes, with 27 sub themes, all selected by people at the JSA event in 2016.</p> <p>He explained that where there were gaps, they would like to look at doing something about it.</p> <p>The onscreen presentation then showed a table of 9 themes, of which, people</p>

were then asked to vote on the top three for their own community.

- 1.Children and young people
- 2.Community Safety
- 3.Culture
- 4.Economy
- 5.Environment
- 6.Health and wellbeing, Leisure
- 7.Your Community & Housing
- 8.Transport
- 9.Older People

Following the vote, themes 1,2,& 5 were prioritised by those in attendance. Further consultation on these themes would go out to parishes to contribute.

Feedback was then sought on what was missing or what else could be done within the three themes.

Children and young people

- Playparks, the PCs were having to take them on with not much help or funding.
- We should ask the young people themselves, go to the youth clubs and groups. **Action: Cllrs to take that on in their own areas.**
- The support to the youth clubs was great, but not all of the young people in our areas had access to youth clubs and activities. Need to look at expanding that to all.
- Battery free light to help children to walk on country roads to school. Could we look at other area boards to see what they are doing in these areas of work. There may be other things we are already doing to see if we can pick up on them. **Action: Tom to do an audit.**
- We don't currently bring the youth clubs together, unite clubs and resources.

Community Safety

- Could we take some time to take this back to our parish councils and then feedback? – yes.
- A closer relationship with the police and the parish councils.
- Lack of communication, it was not a two-way stream.
- PCs feel frustration because they do not see the local bobbies enough.
- When we do let them know about incidents, we would also like feedback on what happened.
- Speeding cars through the villages, only a few have speed watch, if you have not got it then what do you do if there are no volunteers.

Environment

- We have seen great progress with foot paths
- Fly tipping, would it be more economical for people to take things straight to

the tip free of charge? – if all the recycling centres were free this would not affect the fly tipping incidents.

- Environment around housing estates, the lack of weeding and grass cutting, this makes people feel that nobody cares and so why should they care.
- We could have a themed meeting on the environment.
- There are a lot of tasks to be undertaken in the community area, we need volunteers. The more people the better.

The Chairman noted that all of the headings come down to finding people who want to help. He asked them all to go back to their parish councils and community groups and have a thrash about at looking at these and finding logical ideas. Forward the ideas to Tom and we will collate and bring them back to the next Area Board.

Funding available

	Capital		Revenue			
Area Board	Discretionary Capital	CATG funding Capital	Health and wellbeing Revenue	Older Peoples' Champion Revenue	Youth Revenue	Total Area Board budget 18/19
SOUTHERN WILTSHIRE	£31,941	£17,079	£6,700	£1,000	£14,528	£71,247

The Chairman asked those present whether based on the discussion to identifying the three themes, did they want the board to spend money on those themes or not?

As money was increasingly tight, The Board asked for guidance on whether there was support for the idea of a closer relationship between the way we decide grants and the prioritised themes.

A vote was held using the handsets, support for this was not strong, as it was felt that the Board needed to retain the discretion to make individual decisions.

The Chairman noted that he would wait for the fuller feedback from parishes and community groups before we focus on a set area for work.

The Board considered the proposal to allocate funding towards the positive activities provision for the voluntary led youth clubs in Southern Wiltshire, as detailed in the report attached to the agenda.

Decision

The Southern Wiltshire Are Board allocated £2,850 to Innov8 Sportz CIC to provide 60 hours of sports delivery until 31 March 2019.

Decision

The Southern Wiltshire Are Board allocated £5,850 to Boomsatsuma to provide 48 hours of arts delivery until 31 March 2019.

Decision

The Southern Wiltshire Are Board allocated £4,280 to Innov8 Sportz CIC to provide 8 sessions at each group until 31 March 2019.

Youth Grant Funding

The Board considered one application for funding from the Youth Funding budget for 2018/19, as detailed in the report.

The representatives for the application were invited to speak on the project and to answer questions. The main points raised included that the project had been started three years ago, with work to identify a suitable site for the pitch. This had ended with a preferred scheme at Sarum Academy, which would provide use across southern Wiltshire.

The Football foundation would be the main funder, the total project cost would be £700k to construct. There was a 4 phase process. A feasibility study was required prior to the application being submitted.

This grant would help to make this project a reality. The application had also been put forward to Salisbury and South West Area Boards.

The Salisbury City Council would come into this at a later phase.

Questions were asked, these included:

- Cllr McLennan - In my discussions with the applicants, it was explained that the Salisbury area could get 2 pitches. L&F sports club was keen to be put forward as the other areas for a pitch and there was the prospect of Longhedge being a site also. We should wait for a similar application from L&F sports club, in grounds of a local club. The school's opposite would have good use of that pitch. Answer: The project at L&F was one we are working with the FA on, but there was no current funding on the table to move that forward at the moment. Sarum academy has business plans in place and funding in place.
- Cllr Clewer - We have a small amount of money to put in to projects for

	<p>children, I am not sure this was the right thing for our children.</p> <ul style="list-style-type: none"> • Chris Hall – I am appalled that WC is putting this through. This should be funded by WC, not have them apply for a grant to request the funding. • Sarum academy is open until 10pm every night serving the community, this is something for use by the families in the community not for the school. • This is not really what our youth money was intended for, we are here to support the youth division in our communities, this would not be a logical use of our limited resources. <p><u>Decision</u> The Southern Wiltshire Area Board refused the bid for funding from Wiltshire Council for a Third-Generation artificial turf pitch in the Salisbury area.</p> <p><i>Reason</i> <i>The Board felt that it would not be an appropriate use of the limited youth funding resources available to the Board.</i></p>
79	<p><u>Community Area Transport Group (CATG) Update</u></p> <p>The Board noted the minutes of the last CATG meeting held on 11 April 2018, and considered the recommendations arising from that meeting as detailed in the papers attached to the agenda.</p> <p><u>Decision</u> The Southern Wiltshire Area Board approved the recommendations of the CATG as follows:</p> <ul style="list-style-type: none"> • Issue 3790 traffic calming scheme at Ford. Additional costs of £4000 arising from electricity work. CATG agreed to fund £3000 subject to an additional £1000 contribution from Laverstock and Ford PC. • Issue 5637 Improved signage and white lining at White Hill Pitton. CATG is asked to fund £1600 subject to a PC contribution of £400. • Issue 6179 Additional HGV sign at Crockford Road West Grimstead. CATG to fund £900 with a further £300 from Grimstead PC. • Issue 6180 Nameplate for Crockford Road West Grimstead. CATG £180 PC £70. • Issue 6116 New three-armed signpost at Butterfurlong Road. Contribution towards the lettering on the sign to be provided by parishioner. CATG £150; PC £150.

	<ul style="list-style-type: none"> • Issue 5981 Five replacement street nameplates at Alderbury. CATG £625; PC £625.
80	<p><u>Community Area Grants</u></p> <p>The Board considered two applications for funding from the Community Area Grant scheme for 2018/19, as detailed in the attached report.</p> <p>Applicants present were invited to speak in support of their projects. Following discussion, the Members voted on each application in turn.</p> <p><u>Decision</u> Winterslow Short Mat Bowls Club was awarded £927 towards a new mat.</p> <p><u>Reason</u> <i>The application met the criteria of the Community Area Grant Scheme for 2018/19.</i></p> <p>Cllr Clewer noted that following the previous meeting, where this next application had been deferred, he had discussed with the director for planning, and with the developer, but had not been able to make any headway.</p> <p>Cllr McLennan noted that the site was in the Salisbury Area Boards area, and the local Member was Cllr Derek Brown. He went on to state that he had been in discussions with the Monitoring Officer who had advised him that the Southern Area Board should allocate Salisbury Area Boards funds to this project as the school site lays in the Bishopdown ward, and was not part of Southern Wiltshire. He felt that L&F had not been listened to by Salisbury on this project and so had taken the matter to the monitoring officer for advice.</p> <p>Tom had spoken to the Salisbury CEM, who had advised that it would be better received by Salisbury Area Board if there was a part contribution from this Area Board.</p> <p>As the Board did not have the remit to allocate another Area Boards budget to a project, it considered the options available. It was felt that as the site was not part of the Southern Wiltshire community area, the Board would look to Salisbury Area Board to consider the project.</p> <p><u>Decision</u> The Southern Wiltshire Area Board recommends this project for funding by the Salisbury Area Board as the site sits in the Salisbury Area Board community area.</p> <p><u>Reason</u> <i>The school site is in the ward of Cllr Brown who sits on the Salisbury Area Board.</i></p>

81	<p><u>Close</u></p> <p>The Chairman thanked everyone for coming and closed the meeting.</p> <p>The next meeting is scheduled for Thursday 12 July 2018</p>
<p><u>Attachments: Electoral Review Data and Police Update</u></p>	

Electoral Review Information

Background

1. Electoral Reviews determine both the overall number of councillors on a council, and the pattern of divisions within that council.
2. The current review is the first review since Wiltshire Council was formed in 2009.
3. It was required because 25 Divisions had a variance from the average in the size of their electorate of more than 10%, and 2 Divisions had a variance from the average of over 30%.
4. The review's outcome, if implemented, will apply from the next elections in May 2021.
5. **Parliament, not Wiltshire Council, will be responsible for the final decision, following a recommendation from the Local Government Boundary Commission for England (LGBCE).**

Preliminary Phase

6. Wiltshire Council formed an Electoral Review Committee to prepare any submissions to and make any comments in relation to the Electoral Review on its behalf. The preliminary phase is about to conclude, and relates to the overall size of the council.
7. The criteria for assessing the most appropriate council size includes consideration of the government arrangements of the council (eg how many councillors it needs to efficiently conduct its business), the scrutiny arrangements of the council (eg to ensure there are sufficient councillors to hold the executive to account) and the representational role of councillors. The number must be that which is considered best for effective and convenient local government.
8. **The Electoral Review Committee considered a great deal of evidence, and recommended to Full Council that a council size of 99 be submitted to the LGBCE. This was approved on 20 February 2018.**
9. The decision of the LGBCE will be announced shortly. Even if the council size remains relatively unchanged, there will need to be significant changes to the shape of current divisions, due to population changes.

Next Phase

10. After announcing its decision on council size, the LGBCE will hold a **public consultation, the dates of which are yet to be announced.**

11. The consultation will seek proposals from the council, towns and parishes, other community or local groups, and members of the public, on how the determined number of divisions should be drawn up.
12. **Anyone who wishes to make a representation on the pattern of divisions should contact the LGBCE directly via their website - <http://www.lgbce.org.uk/all-reviews>**
13. There will be a briefing for parishes from the LGBCE, with the date still to be confirmed.
14. Wiltshire Council also welcomes any submissions from parishes or the public, to assist it in drawing up its own proposals. **Anyone who wishes to share their views on a submission with the council should email committee@wiltshire.gov.uk**

Submission Details

15. Anyone commenting on proposed divisions or making their own submissions, should be aware of the criteria for assessment of said divisions, as detailed below:

Electoral Equality - Any submissions made will be required to seek to create divisions as close as possible to the average figure of electors per division (not total population per division) identified by the LGBCE when making their decision on council size.

Interests and identities of local communities - this means establishing electoral arrangements which, as far as possible, avoid splitting local ties, and where boundaries are easily identifiable.

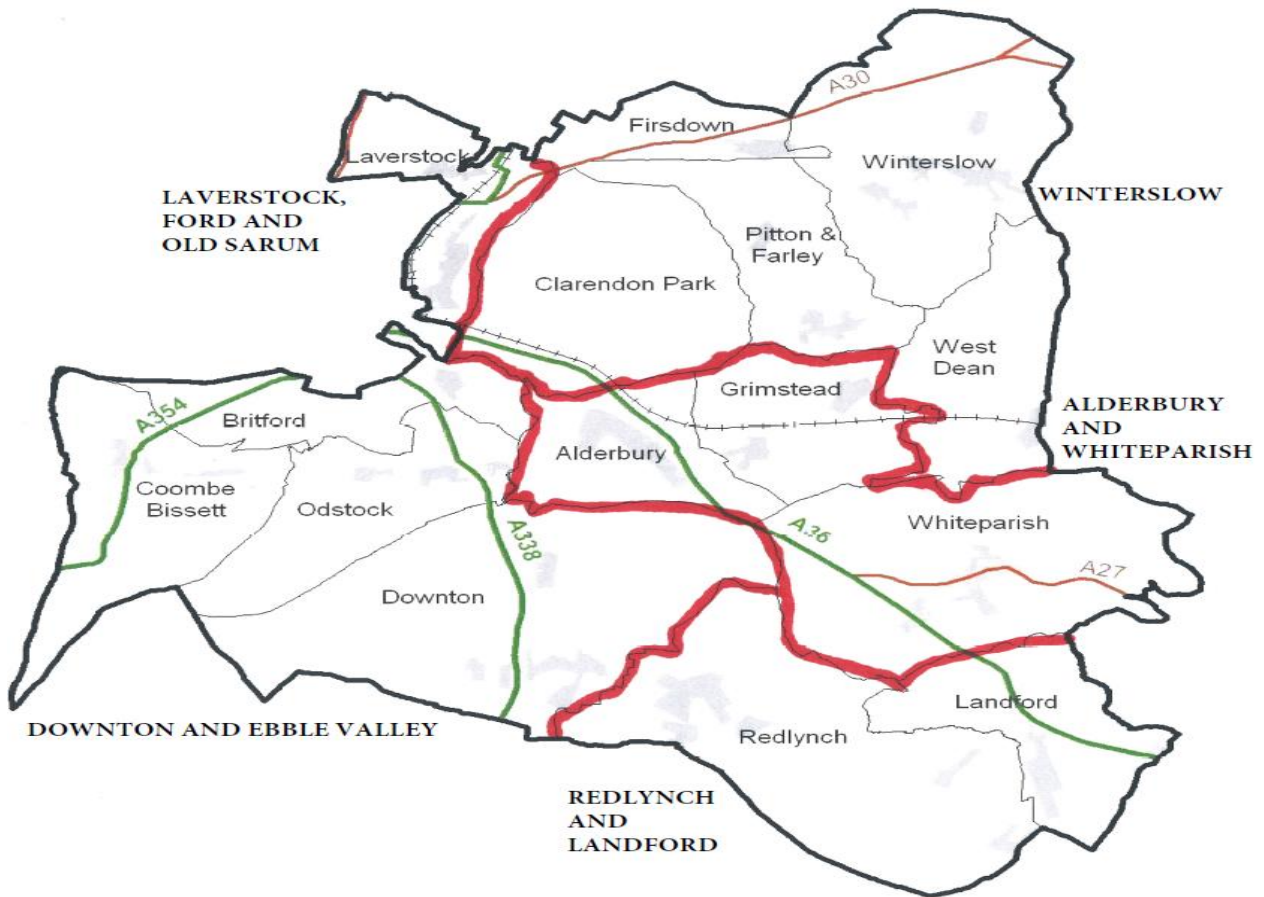
Effective and convenient local government - this means ensuring that the divisions can be represented effectively, and that the electoral arrangements as a whole, allow the local authority to conduct its business effectively.

16. Localised submissions from organisations and communities may justify a level of variance from the average electorate figure, but this would need to be supported by clear evidence.

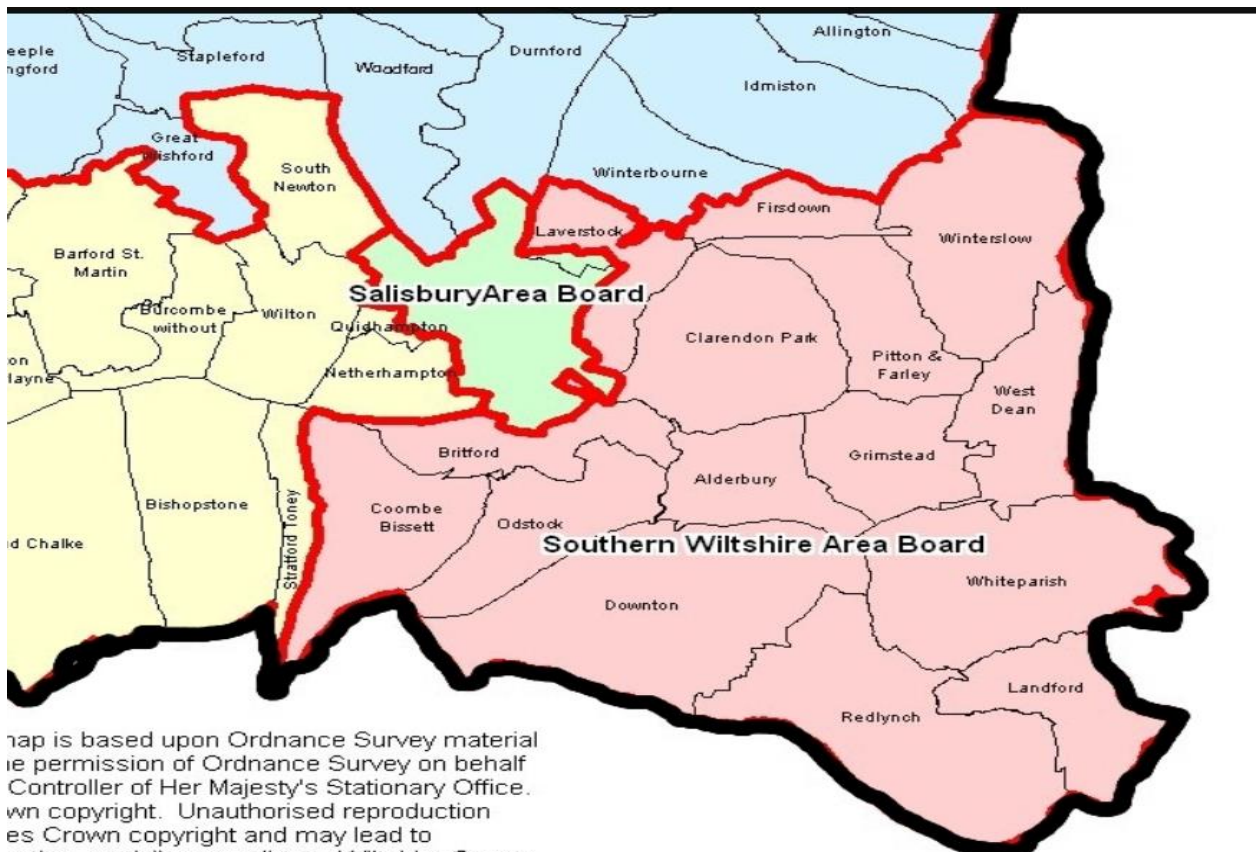
Southern Wiltshire Area Board

17. A map of the current community area boundaries, and the parishes and electoral divisions contained therein, is shown overleaf.
18. **While the Electoral Review Committee is minded to try to recommend new divisions which accord to the current community area boundaries, unless there are justifiable requests to do otherwise, the need to have electorally equal divisions may mean the LGBCE decide it is necessary to create divisions which go beyond the current boundaries. This could be by combining whole parishes or parts of parishes.**

Southern Wiltshire Area Board



Neighbouring Area Boards



This map is based upon Ordnance Survey material in the permission of Ordnance Survey on behalf of the Controller of Her Majesty's Stationary Office. © Crown copyright. Unauthorised reproduction of this map is illegal and may lead to prosecution or civil proceedings. Wiltshire County Council 0119923455 2008

Key facts and figures

19. The current electorate for the Southern Wiltshire Community Area is **18,209**, with 5 electoral divisions.
20. The average division size at present across the council area is **3752**.
21. The projected electorate for the Southern Wiltshire Community Area in 2024 is **20,128**.
The number is presently draft only.
22. Below are listed the draft figures for the projected electorates for the current pattern of division, and for parishes, in 2024. These may be subject to some change.

Divisions

Laverstock, Ford and Old Sarum – 5181 (does not include section of Laverstock Parish currently within Salisbury St Marks and Bishopdown Division)

Winterslow – 3325

Alderbury and Whiteparish – 3583

Redlynch and Landford – 3875

Downton and Ebble Valley – 4163

Parishes

Alderbury – 1844

Britford – 300

Clarendon Park – 208

Coombe Bissett – 599

Downton – 2772

Firsdow – 508

Grimstead – 476

Landford – 1628

Laverstock – 7654 (including 2473 currently in Salisbury St Marks and Bishopdown, and Salisbury Area Board)

Odstock – 457

Pitton and Farley – 656

Redlynch – 2246

West Dean – 204

Whiteparish – 1265

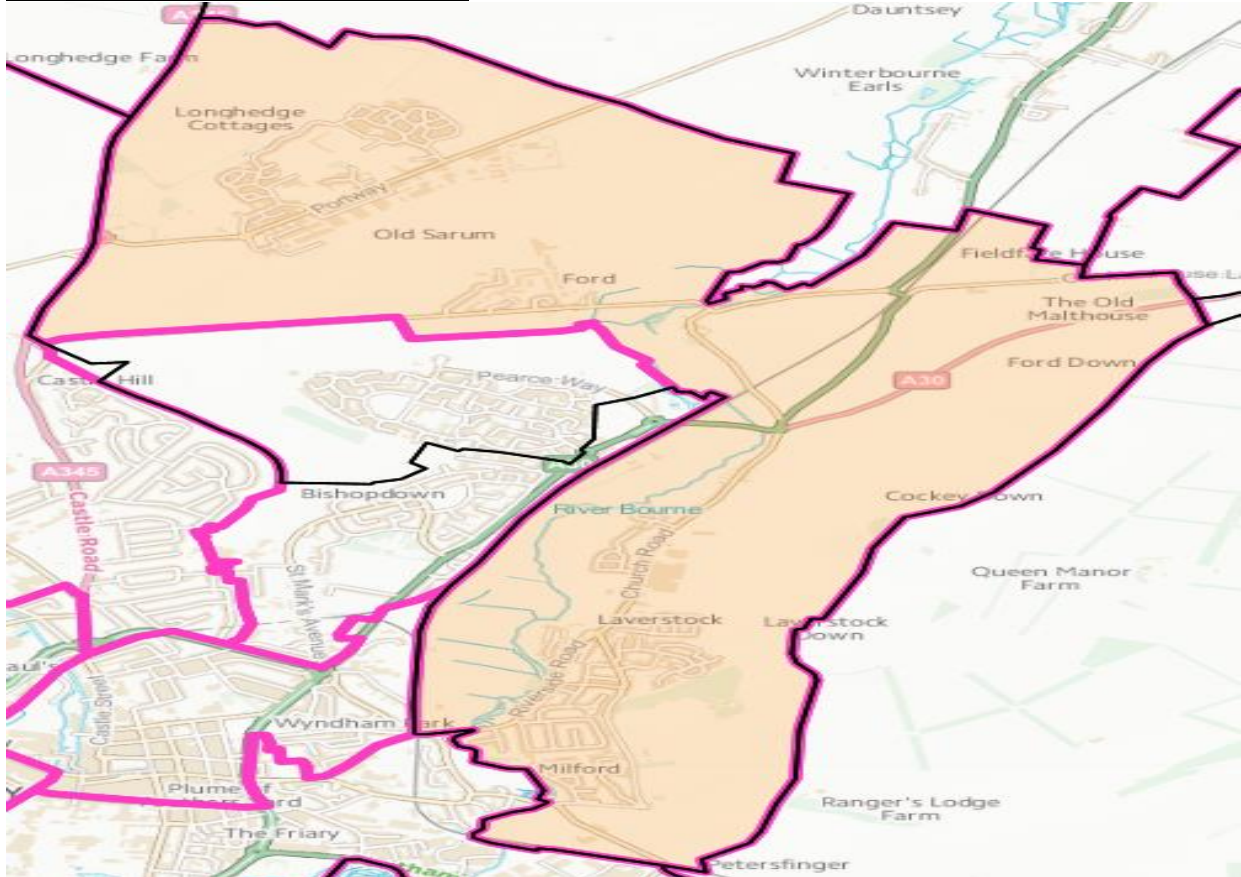
Winterslow – 1748

It is these number that the LGBCE will use to create new divisions. They may use parts of parishes, and may not utilise existing area board boundaries.

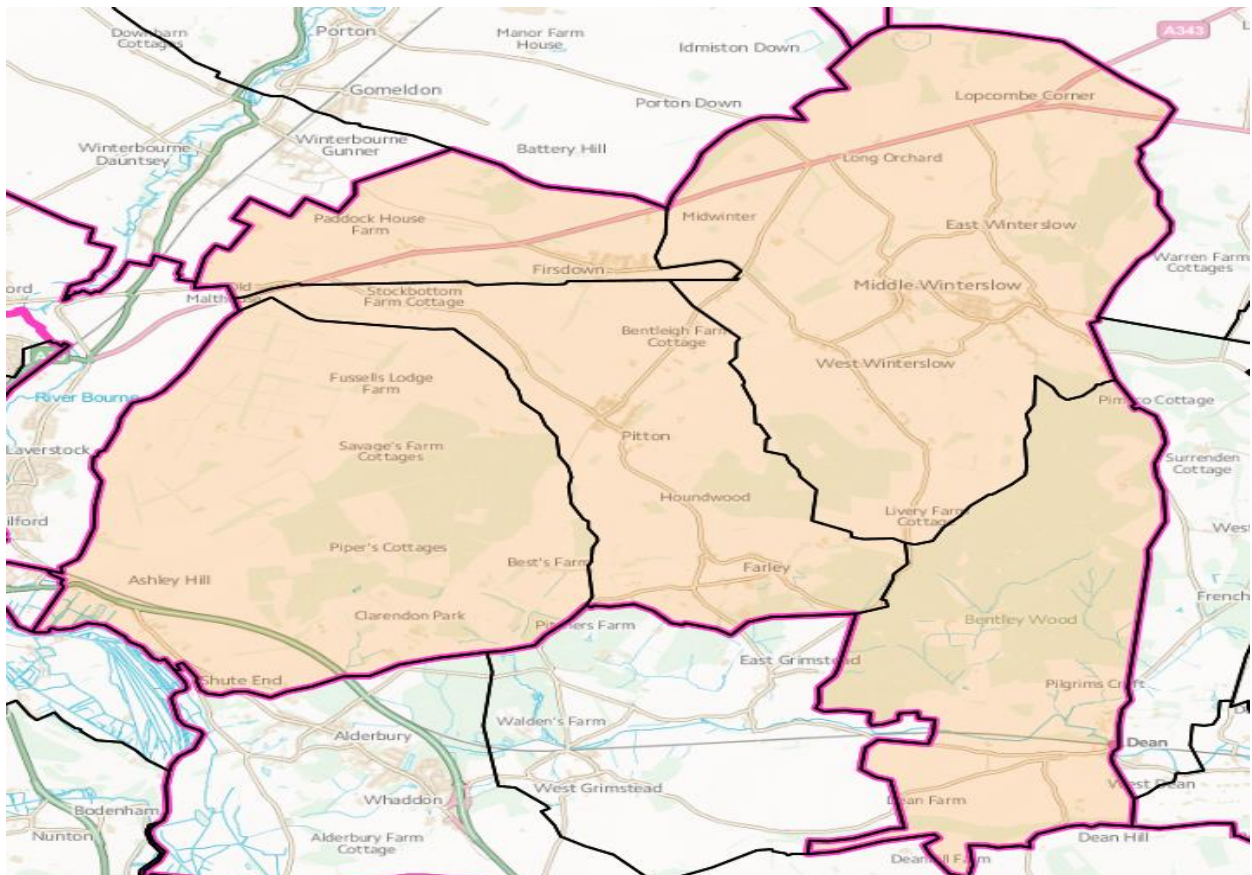
23. Overleaf are maps of the existing divisions.

Current Division Maps

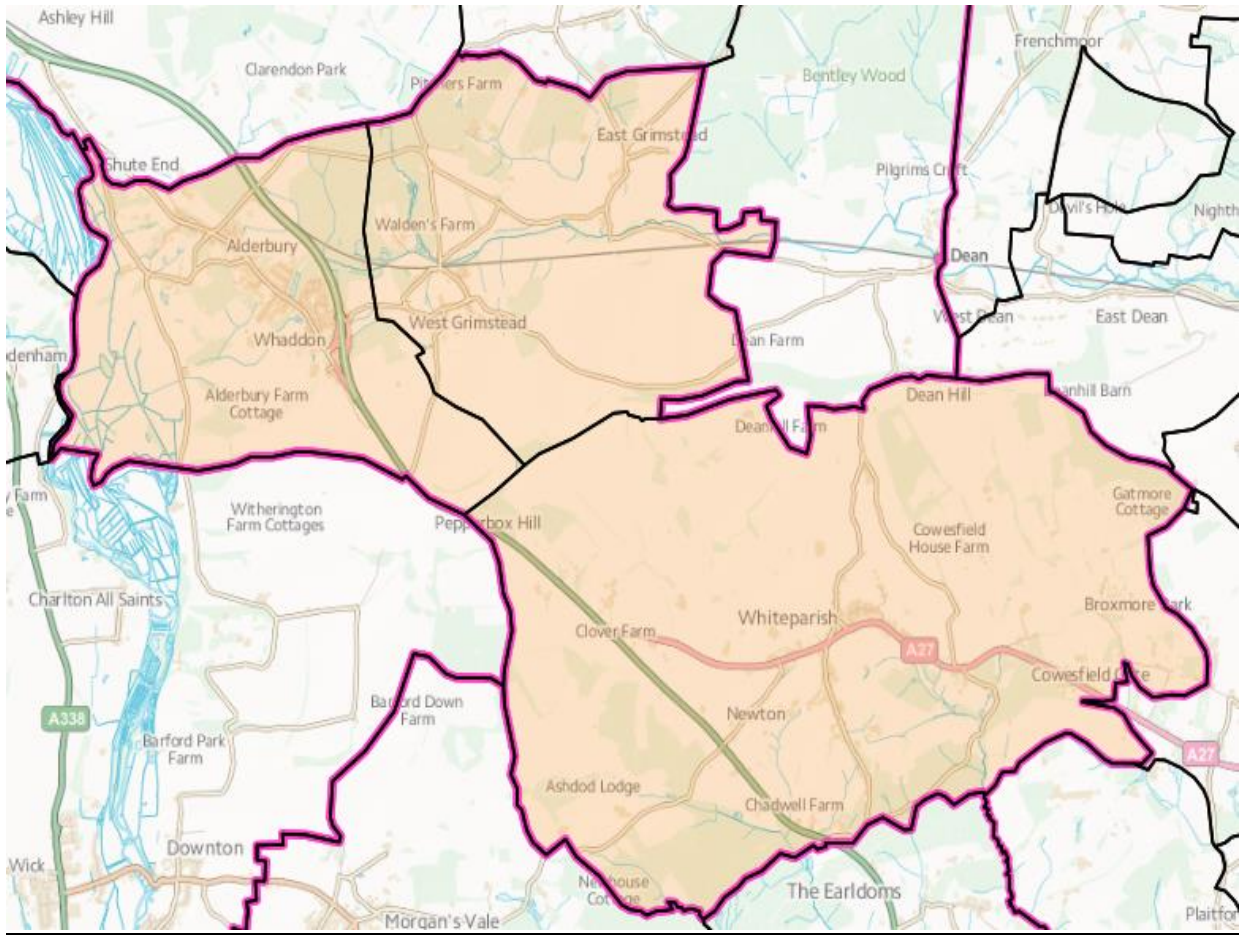
Laverstock, Ford and Old Sarum



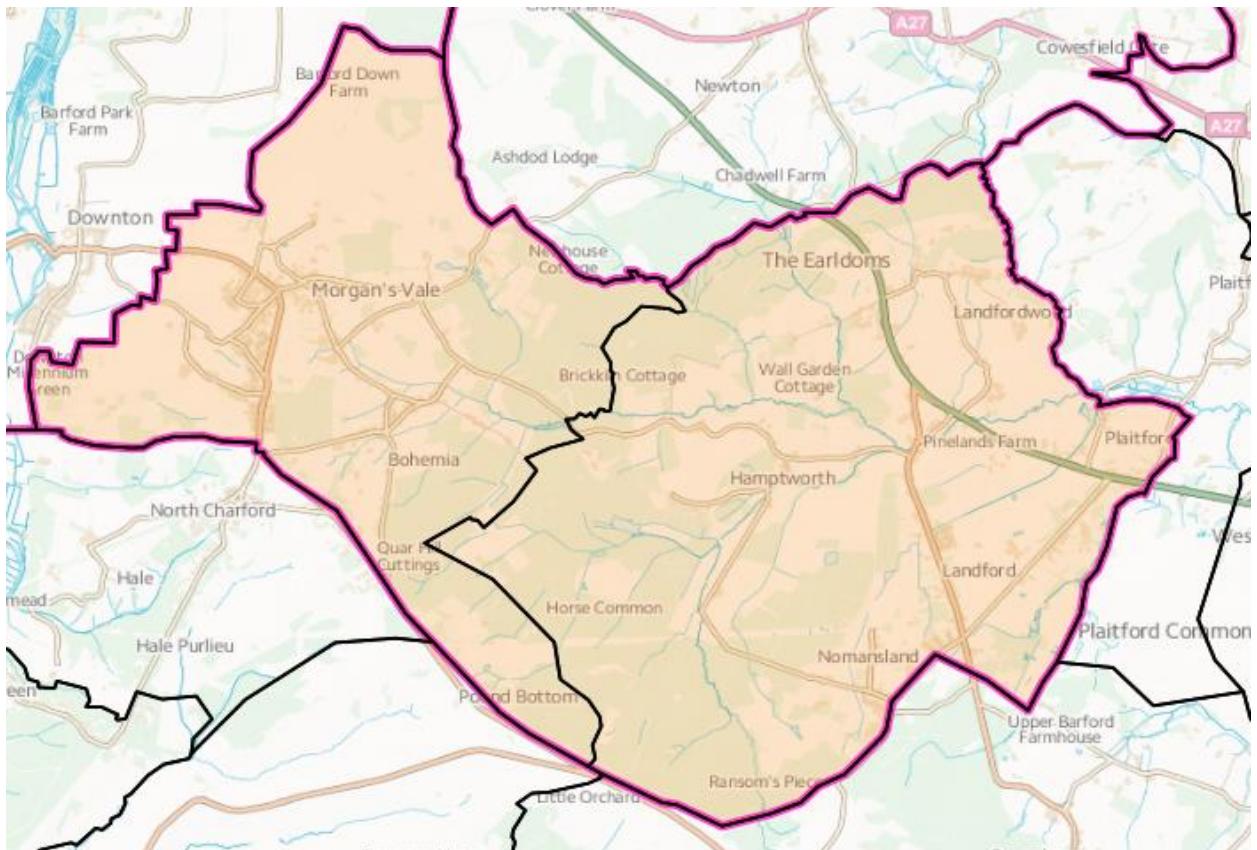
Winterslow



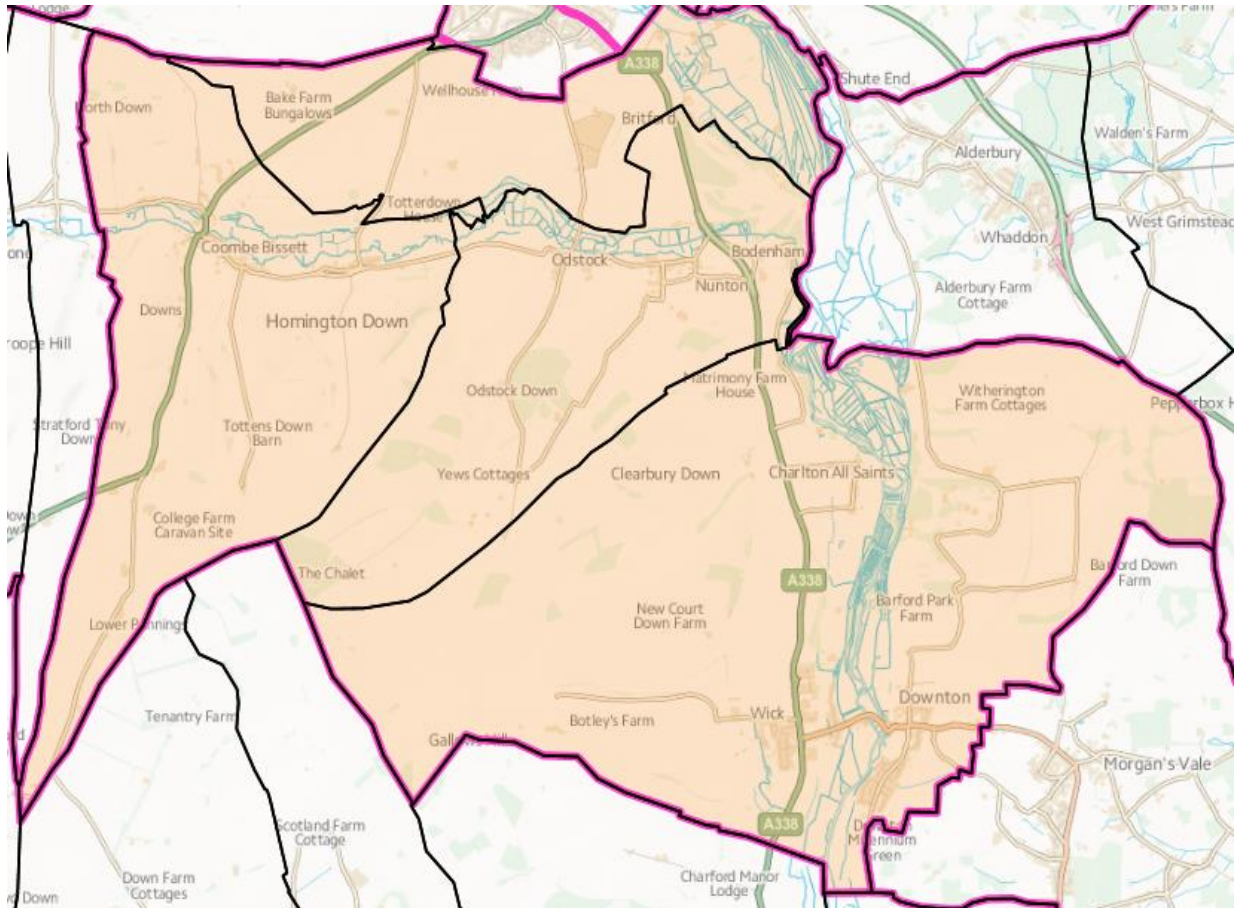
Alderbury and Whiteparish



Redlynch and Landford



Downton and Ebble Valley



Future Stages

24. Some time after the next stage the LGBCE will consult upon its draft recommendations on new divisions, published after considerations of the submissions that have been made.
25. Area Boards will again be consulted at this stage, and the Electoral Review Committee will consider a response to the draft recommendations
26. Sometime in 2019 the final recommendations of the LGBCE will be published. They will be laid before Parliament, where the recommendations may be accepted, or rejected, but not amended.

This page is intentionally left blank



SOUTH WILTSHIRE COMMUNITY POLICING TEAM – May 2018

Southern Wilts Area Board

Sector Head: Insp Pete Sparrow

Sector Deputy: Sgt John Hutchings

Community Coordinator: Pc Matt Holland

Alderbury Rural Beat - PcsO Simon NASH

Downton Rural Beat - PcsO Matt SMITH

Laverstock/ Old Sarum - PcsO Jenny MOSS

Local officers will be attending Downton Cuckoo Fair this Sat 5th May

Current Local Priorities –

-Speed enforcement checks - (see below report for more detail) Teams supporting Community SpeedWatch Teams – areas for targeting selected using data from active CSW Teams – current areas – Coombe Bissett, Landford, Whiteparish and Firsdow

-Theft of lead from buildings – targeted patrols of hotspots – ongoing series – repeat offences in Downton, Redlynch and Coombe Bissett

Area Board Report

Over the last few months South Wiltshire CPT has responded to unprecedented demands, the impact of which has been felt locally and around the world. Much has been said about this major incident in local, national and international media and we still see cordons in and around the city. I'm pleased that we are now moving from crime scenes towards the lengthy clean up phase and that the 4 persons who were physically affected are all showing positive signs of recovery. I apologise for the impact these cordons have had upon both individuals and businesses and can assure you that Wiltshire Police continue to work closely with our colleagues in Counter Terrorism and DEFRA to balance the needs of the investigation without sacrificing the safety of the public.

The incidents of 4th March 2017 have instigated an expression of public support for their emergency services. The community spirit has been based around unity. Acts of kindness continue with offers of warm drinks on cold days and ice-cream in the heat. There have even been offers of roast dinners and haircuts! But what really struck me were the messages of support and good wishes towards the recovery of those affected and the efforts of the emergency services



that have been received from around the World. There really have been too many to respond to, but each and every one has been gratefully received.

I am incredibly proud of the way my officers responded on the day as well as the way the wider Policing family have united to meet the demands. No Police service could manage an incident of this scale without the support of mutual aid. We still have over 80 officers per day working on managing the cordons with countless others working on the investigation and cleaning operation. The 'can do' attitude of everyone involved is heartening. They have embraced the true meaning of Community and have immersed themselves with engagement at every opportunity to help reassure the public and soften their impact.

It is worth noting that Major Incidents do not happen very often. However, South Wiltshire CPT responded to two within a week. The officers who attended to the medical needs in the Maltings were the same officers who had been working extensive hours to help rescue motorists trapped in the snow during their preceding shifts. Again, this demonstrated the community spirit that exists in South Wiltshire with support from farmers and 4x4 drivers coming to help.

When the Community Policing Team Model was introduced in October 2016, the Policing areas were based on demand profiles. A recent decision was made to bring Amesbury and Tidworth area away from the East CPT and into the South CPT, which came into place at the start of April. This is a move that I welcome as it provides me the resilience I need to move resources to meet the demand. My focus now is to increase the number of frontline deployable officers, help these two areas work as one team and deliver the best possible service to our community.

I noted with interest the latest media release from the ONS on Crime Statistics, which reported that between January 2017 and December 2017, Wiltshire Police recorded 44,043 crimes overall – an increase in 7.9% compared to the national average of 15.3% and 11.1% regionally. Statistics are often blunt tools and caution should always be taken when trying to interpret them, particularly when the sample size is small. In no way would I want to represent that a rise in crime is good, but crimes in Wiltshire were rising at a slower rate than the national picture.

I have reviewed our 12 month figures for South Wiltshire to the end of March 2018, where we witnessed a 3% rise in All Crime. I have broken them down to each Area Board to provide you with an opportunity to appreciate the scale and direction of various crime types and local variance. The most significant figures that I would like to highlight are:

Robbery – Down by 42%; Possession of Drugs Down by 28%, but Trafficking of Drugs Up by 79%. This is the reflection of the targeting of County Line Drug Networks, particularly in Salisbury. The focus on dealing and not simple possession has led to improved community intelligence, supporting the use of closure orders and protection of vulnerable addicts who can be directed



toward rehabilitation. Although a Salisbury based focus, the tendrils of Class A drug addiction impacts on crime rates on a much wider area.

Violence with injury is Up by 16%. This rise is across all areas and will need some more research to appreciate how this rise compares when split between private and public space violence and any relationship with Domestic Abuse.

Sexual Offences are Up 21%. This is principally due to one ongoing investigation and inappropriate to comment further.

Cycle Theft Up 65%. We have recognised this and PCSO Simon Nash is organising a cycle marking and register event in partnership with www.bikeregister.com from the Five Rivers Leisure Centre. Once we have details we will circulate them on our Social Media and Community Messaging.

I hope these figures reassure you that the South Wiltshire area remains a safe low crime area.

South Wiltshire CPT have also joined forces with our local Community Speed Watches. We are now being provided the data that they collect to help direct our officers in prioritising where they should be conducting speed enforcement. I often hear from various Area Boards that speeding is one of their top concerns and that they never see a Police Officer... well here is an opportunity for the various Area Boards to set up and support more CSW programs. I will commit that South Wilts CPT will attend the top 3 locations based on collected speed data and 1 further location that is rotated to allow us to attend all CSWs over the year. These areas will change on a fortnightly basis and we will keep publicising where we are going, although not the times we will be out. Sometimes we will do this with the CSW and at others not. Not only is this a great way to support another volunteer sector, it is also an opportunity to demonstrate that our officers are getting out onto their areas.

Pete Sparrow
Sector Inspector,
Wiltshire South CPT



	Tidworth			Amesbury			Salisbury			Southern			Wilton			South Wiltshire Total			Wiltshire Police Total		
	2016/ 17	2017/ 18	%	2016/ 17	2017/ 18	%	2016/ 17	2017/ 18	%	2016/ 17	2017/ 18	%	2016/ 17	2017/ 18	%	2016/ 17	2017/ 18	%	2016/ 17	2017/ 18	% chan ge
All Crime	798	899	13%	1368	1464	7%	3625	3720	3%	812	841	4%	463	389	-16%	7066	7313	3%	41681	43618	5%
Burglary	73	83	14%	118	127	8%	225	239	6%	148	125	-16%	59	35	-41%	623	609	-2%	4019	4076	1%
Robbery	2	1	-50%	3	2	-33%	27	15	-44%	1	0	-100%	0	1	-	33	19	-42%	224	291	30%
Crim Damage & Arson	120	139	16%	210	225	7%	599	572	-5%	133	129	-3%	102	75	-26%	1164	1140	-2%	5994	6099	2%
Sexual Offences	48	39	-19%	47	63	34%	128	136	6%	22	54	145%	17	24	41%	262	316	21%	1488	1709	15%
Possession Of Drugs	23	16	-30%	42	42	0%	116	84	-28%	13	3	-77%	9	1	-89%	203	146	-28%	995	797	-20%
Trafficking of Drugs	3	1	-67%	5	7	40%	34	66	94%	1	3	200%	0	0	-	43	77	79%	191	211	10%
Vehicle Crime	60	52	-13%	125	126	1%	195	225	15%	82	75	-9%	60	43	-28%	522	521	0%	3431	3814	11%
Cycle Theft	8	14	75%	8	9	13%	48	77	60%	2	10	400%	3	4	33%	69	114	65%	768	912	19%
Shoplifting	24	53	121%	45	52	16%	412	394	-4%	9	7	-22%	15	6	-60%	505	512	1%	3666	4196	14%
Theft from the Person	1	0	-100%	13	3	-77%	68	66	-3%	4	3	-25%	4	0	-100%	90	72	-20%	409	396	-3%
Other Theft	67	101	51%	156	193	24%	388	396	2%	121	118	-2%	53	52	-2%	785	860	10%	3976	4436	12%
Violence with Injury	136	145	7%	197	241	22%	445	497	12%	81	114	41%	49	52	6%	908	1049	16%	5595	5655	1%
Violence without Injury	166	172	4%	301	266	-12%	614	642	5%	147	152	3%	72	77	7%	1300	1309	1%	7332	7502	2%
Possession Of Weapons	2	6	200%	9	5	-44%	29	21	-28%	4	2	-50%	0	0	-	44	34	-23%	274	279	2%
Public Order Offences	54	65	20%	65	71	9%	249	234	-6%	34	34	0%	16	14	-13%	418	418	0%	2603	2455	-6%
Misc Crimes Against Society	11	12	9%	24	32	33%	48	56	17%	10	12	20%	4	5	25%	97	117	21%	714	790	11%



This page is intentionally left blank